



Sea Monkeys

Kathy Hoppe, Science Support

www.sciencesupport.net

What are "sea monkeys?"

Urban legends

Giant killer Sea Monkeys in NYC Sewers!

Children flush unwanted Sea Monkeys down the toilet! They grow to enormous size and threaten humans by attacking for revenge. It is even believed that Sea Monkeys play dead just to join the others in the sewer in the fight against the oppressive human population!

NOT TRUE! Sea Monkeys only grow to a maximum of about 1 inch.



So...What are Sea Monkeys, really?

Brine shrimp

other wise known as

Artemia salina

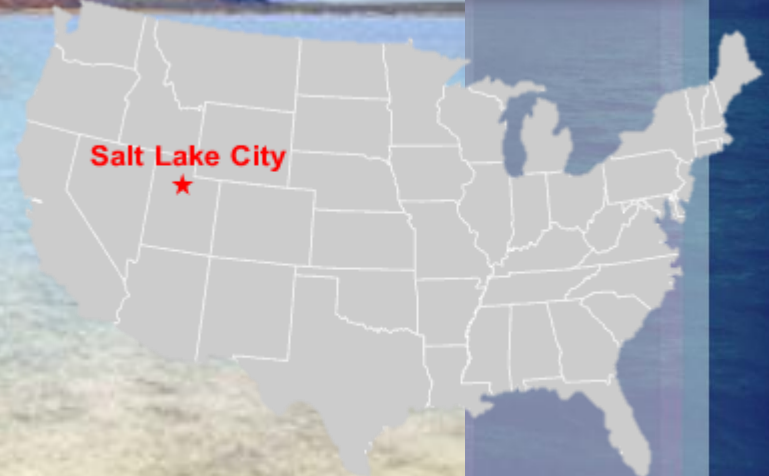
Phylum Arthropoda

Jointed legs and exoskeleton



Where do they live?

Great Salt Lake *Utah*



San Francisco Bay



Fish Food

General information

100% of the finest brine shrimp eggs from the Great Salt Lake! Easy to hatch! Innovative Nitro Pack inner package assures a great hatch. Ideal for reef tanks and baby fish! Hatching instructions: Use 25gr to 35gr (+/- 1 soup spoon) of salt per liter and add +/- 2gr of brine shrimp eggs per liter. Use tap water and pour salt into the cone with air pump running. When using kitchen salt, it is best is to add +/- 3gr (1 teaspoon) of sodium-bicarbonate (backing soda). Make sure the water temperature is maintained between 26° - 29° during the incubation period. (Do not exceed 30°C, as improper temperature control is the main reason for a bad hatch). The air line should reach to the bottom of the hatching vessel to ensure vigorous and homogenous mixing. An air stone is not recommended. Add the eggs to the hatching water and make sure air keeps eggs in suspension. Eggs will hatch into very tiny, nearly microscopic "Nauplii" (babies) in 18 to 30 hours. You can harvest by removing the air tube and waiting two to five minutes for the orange nauplii to come to the bottom of the cone. After 24 hours stop aeration and wait 10 minutes until nauplii settle to the bottom. Empty shells will float at the surface. Siphon the nauplii on a sieve, rinse carefully with tap water and feed to your animals.

Ingrediënts

Brine Shrimp Eggs.

Packaging details

1025070, Artemia/Brine Shrimp Eggs, box of 50gr
1025085, Artemia/Brine Shrimp Eggs, can of 454gr

Did you know?

The new breed Artemia nauplii contain the natural carotenoid pigment canthaxanthine.

Could be used for these groups of fish

- > [Angels - Pygmy Angels](#)
- > [Barbs - Tetra's - Rasbora's](#)
- > [Butterflyfish](#)
- > [Cardinals - Mandarins](#)
- > [Cichlids](#)
- > [Clownfish](#)

Related products

- > [Cyclops](#)
- > [Brine Shrimp Eggs Pre-Mix](#)
- > [Nano Reef Fish Food](#)
- > [Red Plancton](#)
- > [Instant Baby Brine Shrimp](#)

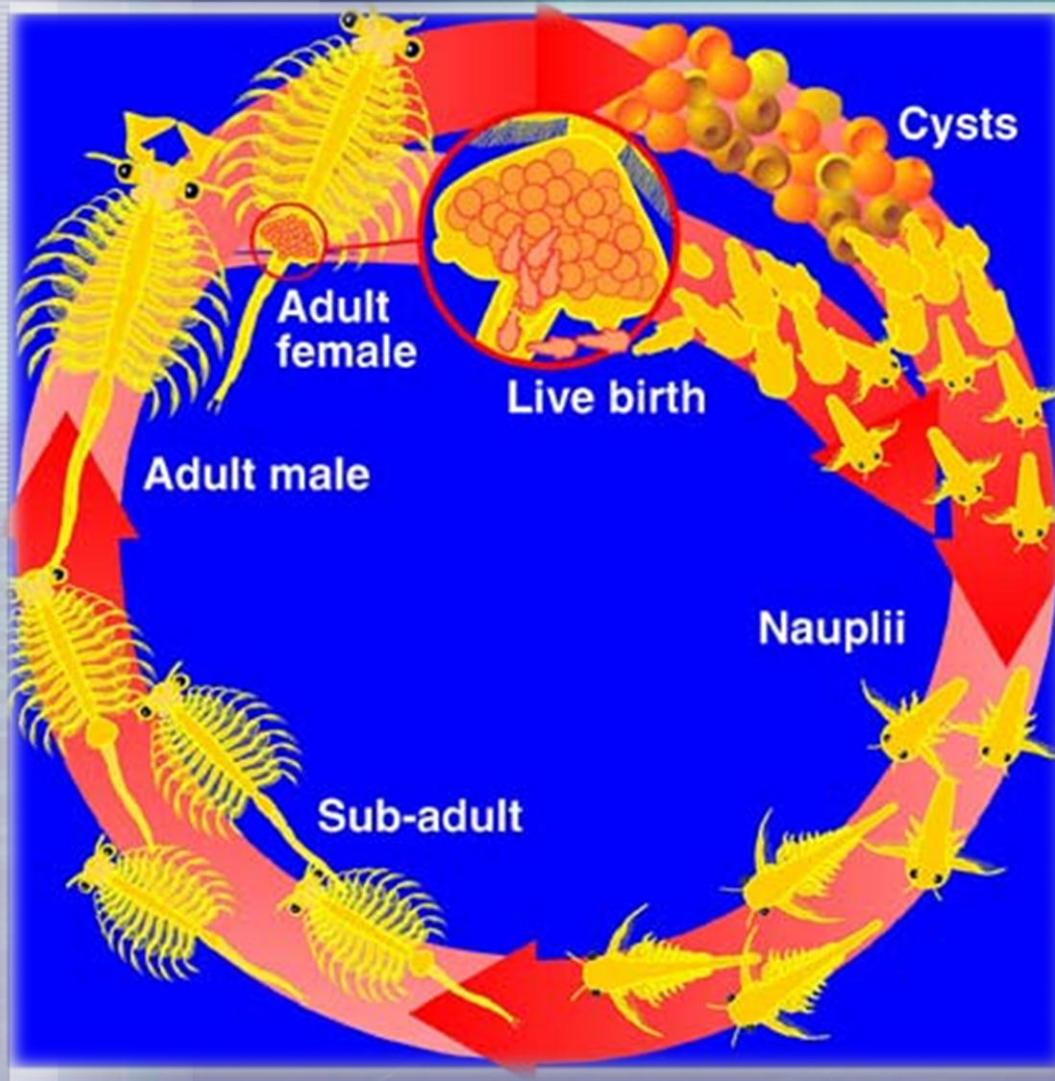


Who fishes for them?



What about the life cycle of Brine Shrimp?

Cysts in diapause

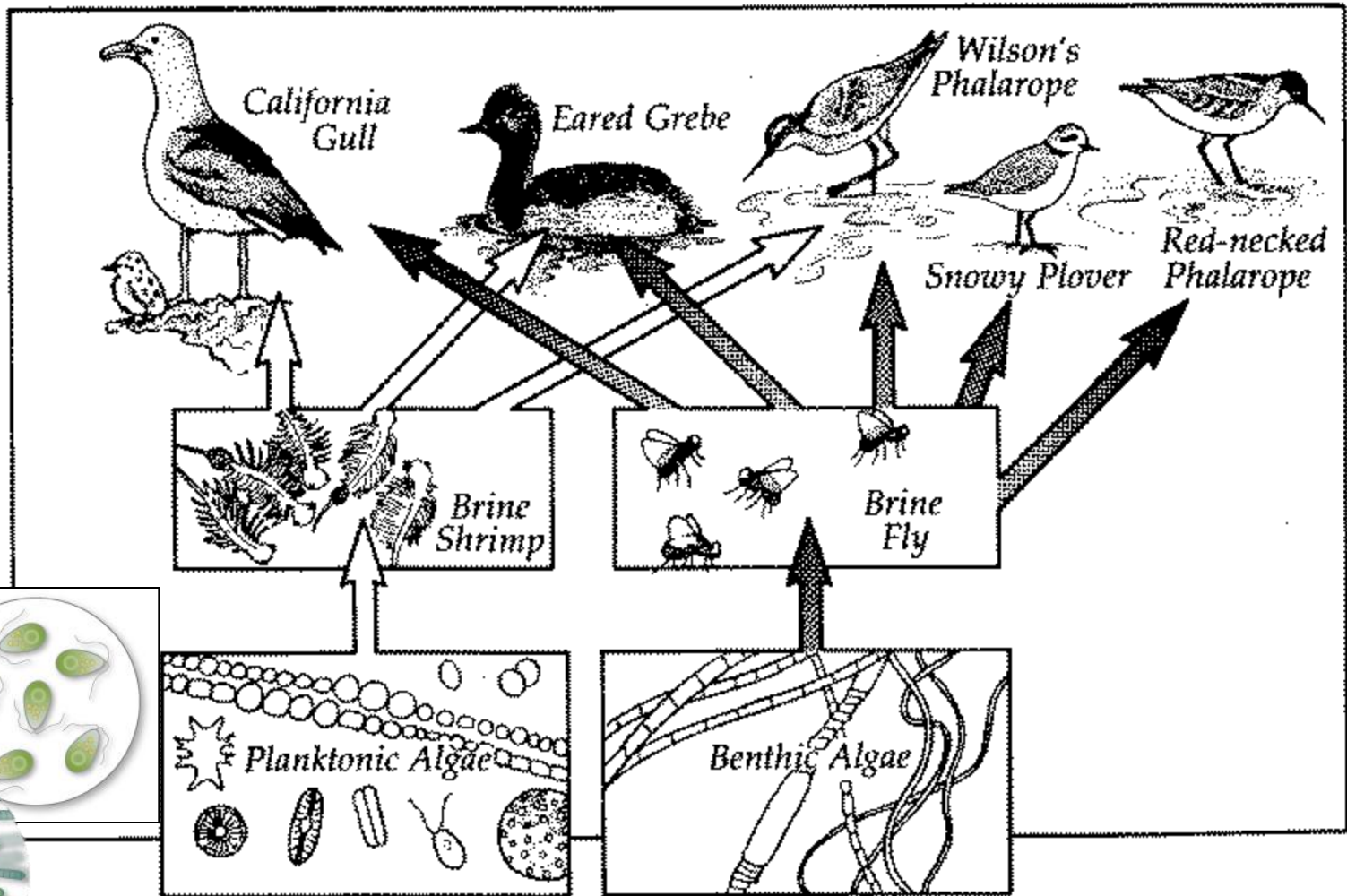


[Interactive Life Cycle](#)



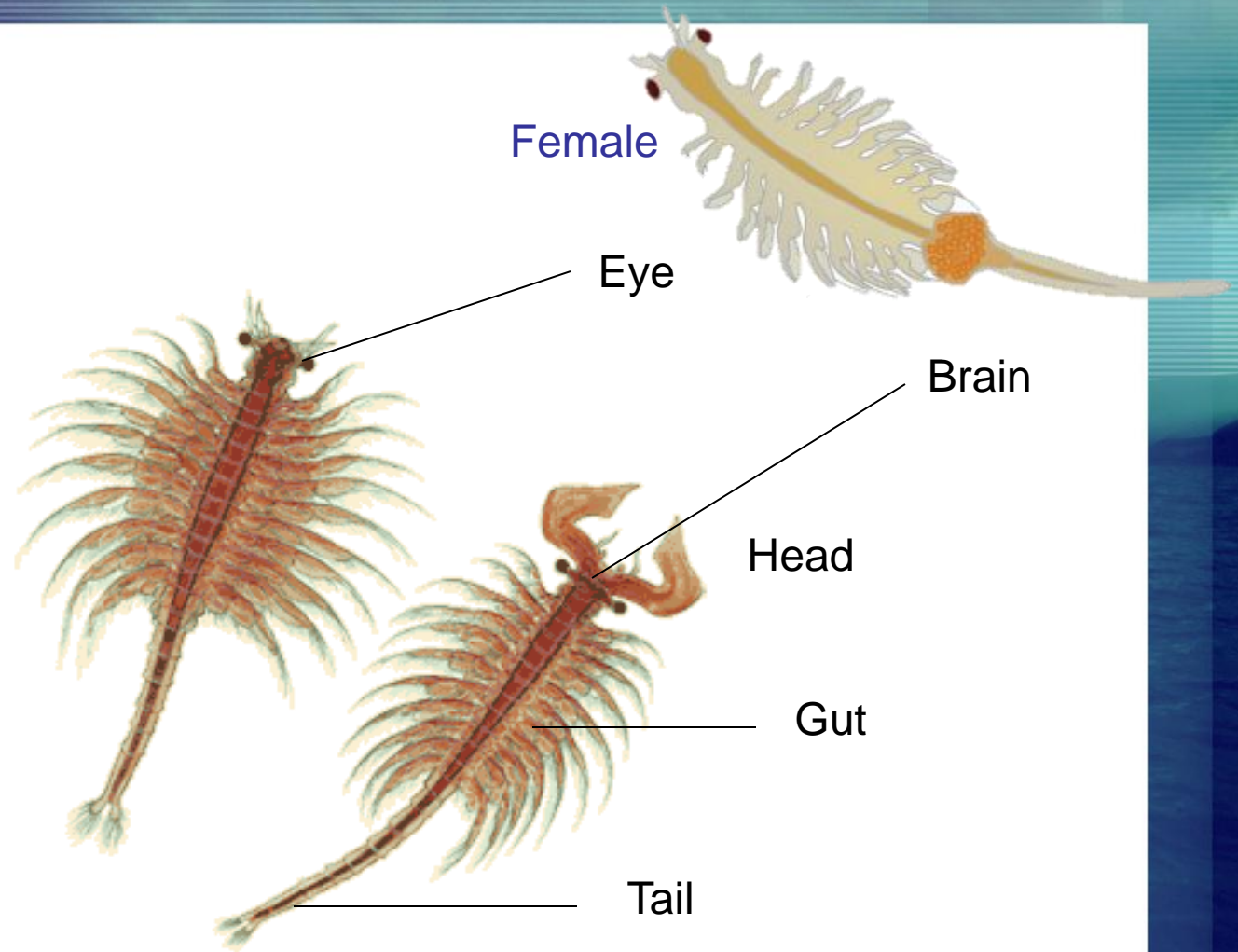
What do Brine Shrimp eat?

Mono Lake Food Web



Bacteria, algae, small particles of matter

*What is the anatomy of the adult Brine Shrimp?
How do you tell if one is male or female?*



How do you raise Brine Shrimp?

Distilled Water

Aerate tap water for 24 hours

- If highly chlorinated, aerate for 72 hours

Prepare salt water

- Fill the bucket to four quart line
- Add ½ cup of sea salt and stir
- Aerate for 24 hours

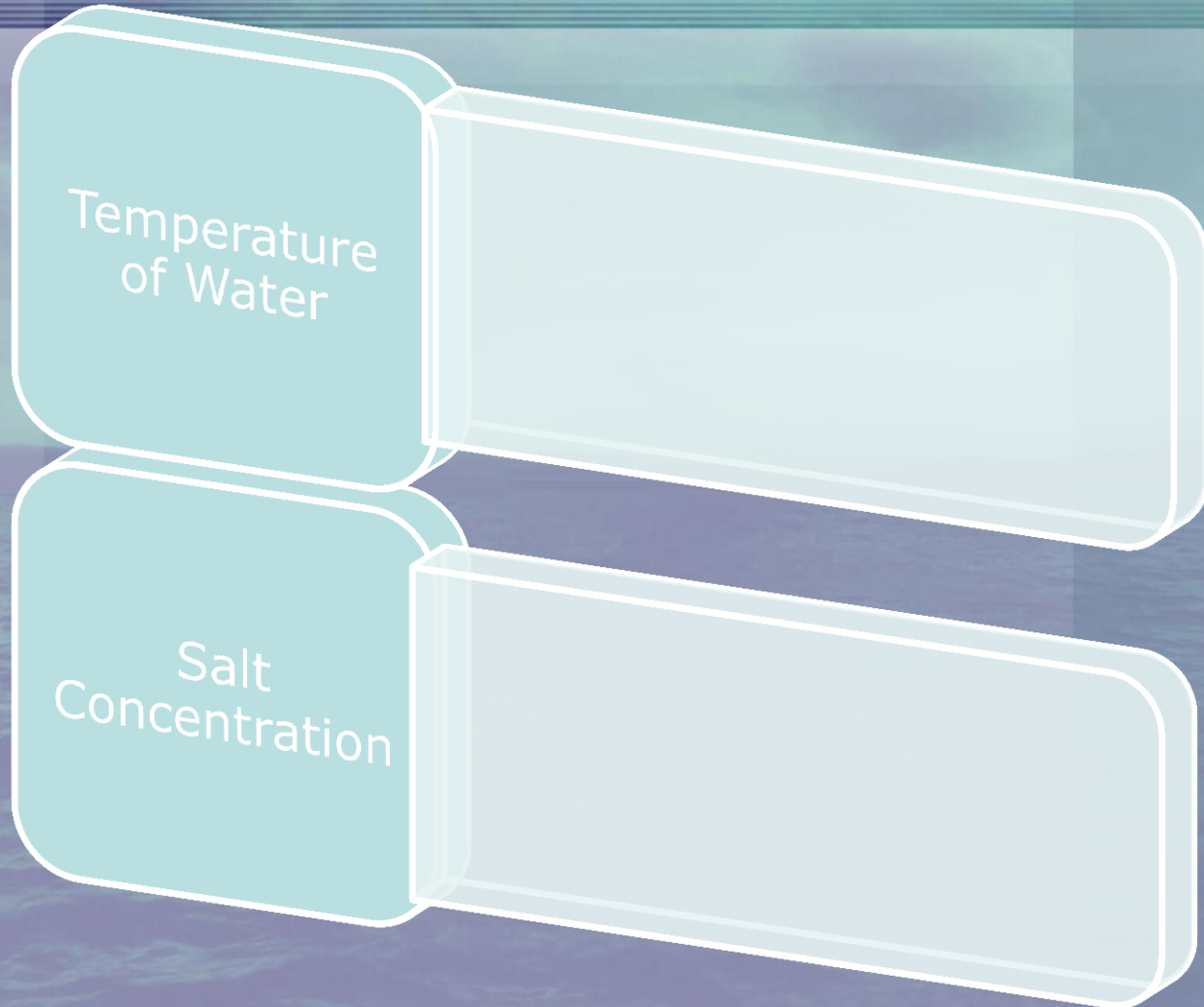
Raise in an aquarium

The Eggs

- Keep eggs dry until hatching
- Use a toothpick to add brine shrimp eggs to the culture jar
- Hatching time is about 1-4 days

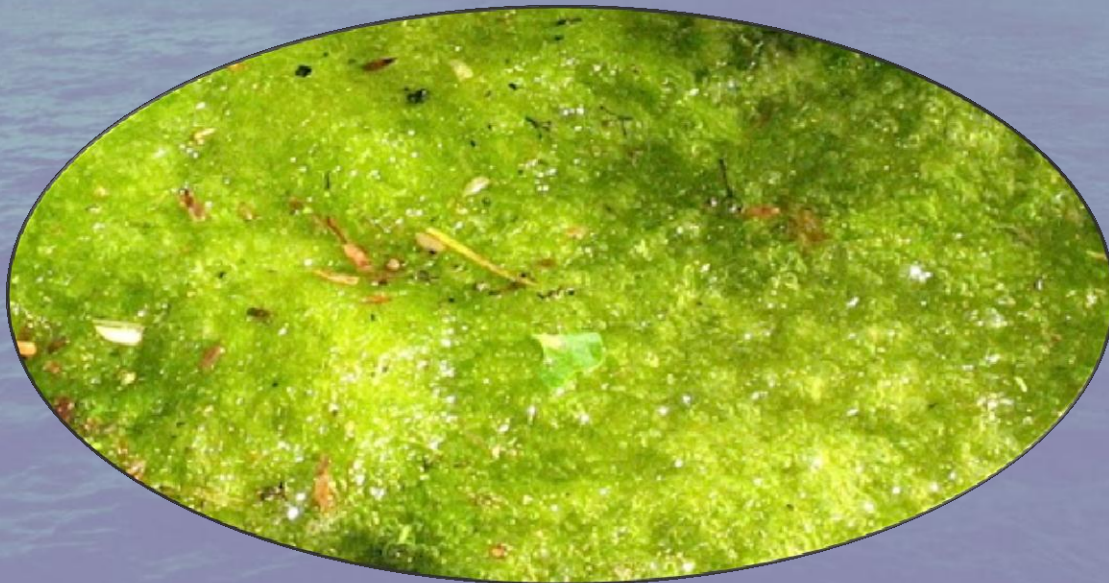


What variables will you change?



Maintaining Brine Shrimp

- Food: Algae
- Keep cultures in bright sunlight
- Add aged tap water
- No rapid temperature change





[More information](#)