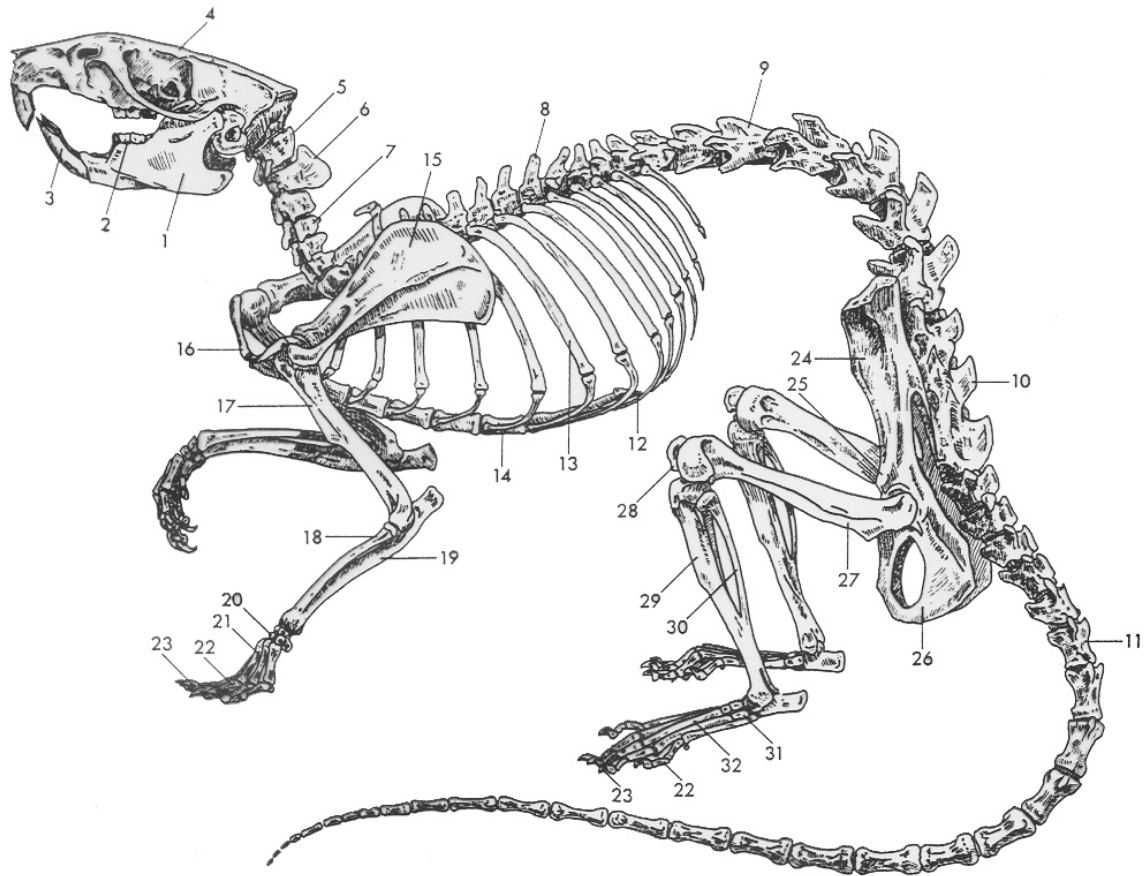


# RAT SKELETON



- |                      |                 |
|----------------------|-----------------|
| 1. Mandible          | 17. Humerus     |
| 2. Molar             | 18. Radius      |
| 3. Incisor           | 19. Ula         |
| 4. Skull             | 20. Carpals     |
| 5. Atlas             | 21. Metacarpals |
| 6. Axis              | 22. Phalages    |
| 7. Cervical vertebra | 23. Claw        |
| 8. Thoracic vertebra | 24. Ilium       |
| 9. Lumbar vertebra   | 25. Pubis       |
| 10. Sacrum           | 26. Ischium     |
| 11. Caudal vertebra  | 27. Femur       |
| 12. Xiphoid process  | 28. Patella     |
| 13. Rib              | 29. Tibia       |
| 14. Sternum          | 30. Fibula      |
| 15. Scapula          | 31. Tarsus      |
| 16. Clavicle         | 32. Metatarsus  |